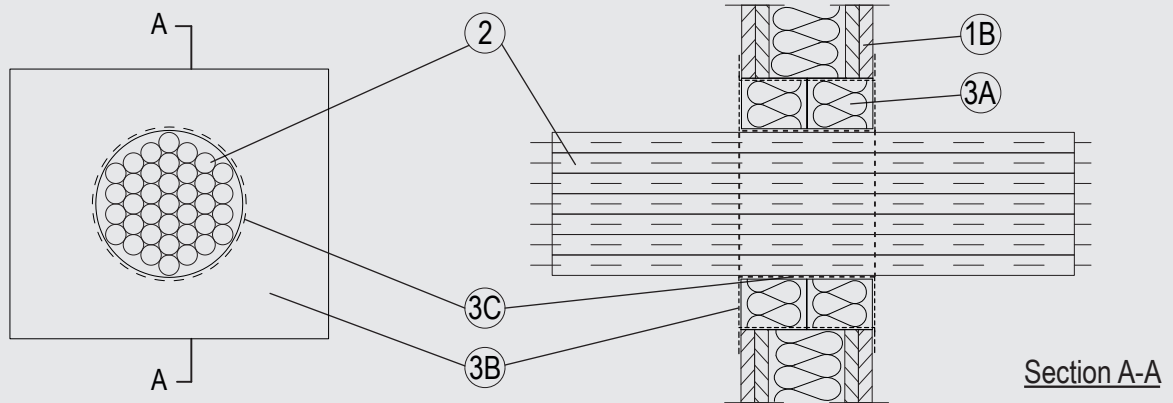


Through-penetration Firestop Systems

System No. W-L-3472

CAN / ULC S115

	F Rating - 2 Hr
	FT Rating - 1-1/2 Hr
	FH Rating - 0 Hr
	FTH Rating - 0 Hr



1. Wall Assembly

The 1 or 2 hr fire rated gypsum board/stud wall assembly shall be constructed of the materials and in the manner described in the individual U400, V400 or W400 Series Wall and Partition Design in the UL Fire Resistance Directory and shall include the following construction features:

- A. Studs (not shown in diagram) – Steel studs to be min 2-3/4 in. (70 mm) wide spaced max 24 in. (610 mm) OC.
- B. Gypsum Board* – The gypsum board type, thickness, number of layers, fastener type and sheet orientation shall be as specified in the individual Wall and Partition Design in the UL Fire Resistance Directory. Max size of opening to be 12 in. (300 mm) high by 12 in. (300 mm) wide.

2. Cables

Bundle of 6" (150 mm) diameter of the following types and sizes of cables may be used.

- A. Max 20/C No. 19 AWG (0.6 mm) diam (or smaller), copper conductor telecommunication cables PE jacket.

3. Firestop System

The Firestop System shall consist of the following:

- A. Packing Material – Nom. 2-3/8 in. (60 mm) thick mineral wool boards min. 3.7 pcf (60 kg/m³) firmly packed into the opening of the wall as a permanent form. Packing material to be installed flush with both surfaces of wall.
- B. Fill, Void or Cavity Material* – Min. 1/8 in. (4 mm) dry film thickness to be applied, coating the inside surface of the opening before installation of the packing material and over the full surface of the mineral wool boards, and overlapping onto the wall by min. 3/4 in. (20 mm).

Flamro Brandschutz-Systeme GmbH – FLAMMOTECT-A

- C. Fill, Void or Cavity Material* – 1 length of 1 layer of 1/16 in (1.5 mm) by 2 in. (50 mm) wrap flush mounted with the outside of the gypsum mortar / gypsum board on both sides around the cable bundle.

Flamro Brandschutz-Systeme GmbH – DG-CR BS