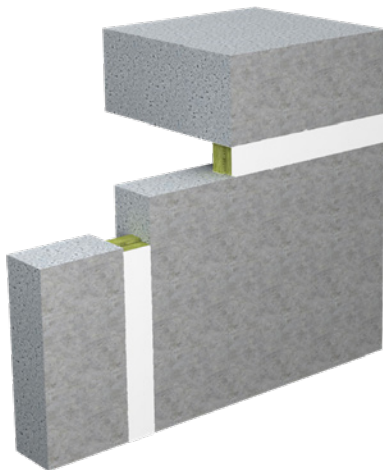


# System Flammotect Joint Seal

Versatile joint sealing system made of mineral fibre products and ablative fire protection coating



## Fire Resistance Class

max. EI 120 in acc. with EN 13501-2

## Field of Application

- Joints between solid walls, between floors and between walls and floors

## Products



### FLAMMOTECT-A Coating

Pail, 12.5 kg – Art. no. 01155131

### Solid emulsion

Pail, 12.5 kg – Art. no. 01155136

Pail, 5.0 kg – Art. no. 01155121

### Filler

5 kg pail – Art. no. 01155135

12.5 kg pail – Art. no. 01155134

310 ml cartridge – Art. no. 01155115

600 ml flow pack – Art. no. 01155153

## System Data

<b>Certificate of usability</b>		ETA-18/0237
<b>Thickness of structural element</b>	Wall	≥ 100
	Floor	≥ 150
<b>Sealing thickness</b>	Wall	Joint width ≤ 200
	Floor	Joint width ≤ 200

All specifications in mm



### Mineral wool ProRox LF 970

10 kg bag – Art. no. 01183000



### Lamella mat Klimarock

Roll of 3.05 m<sup>2</sup> – Art. no. 01187100



### Label

1 piece – Art. no. 14003

## System Flammotect Joint Seal

### Design variants

Design with	Thickness of building element [mm]		Max. joint width [mm]	Min. joint depth [mm]	Fire resistance class	
	Wall	Floor			Wall	Floor
Mineral fibre boards, double layer EI 120 - H - X - B - W 00 - W 200 EI 120 - V - X - B - W 00 - W 200 EI 120 - T - X - B - W 00 - W 200	≥ 150		≤ 200	100	EI 120	EI 120
Thickness of mineral fibre boards 2 × ≥ 50 mm, installed in the middle or flush with upper/left or lower/right seal edge. Glued inside building element and coated on outer edges with FLAMMOTECT-A.						
Mineral fibre boards, single layer EI 60 - H - X - B - W 00 - W 200	–	≥ 150	≤ 200	50	–	EI 60 / E 120
Thickness of mineral fibre boards 1 × ≥ 50 mm, installed in the middle or flush with upper or lower seal edge. Glued inside building element and coated on outer edges with FLAMMOTECT-A.						
Lamella mat EI 120 - H - X - B - W 00 - W 100 EI 120 - T - X - B - W 00 - W 100	≥ 100	≥ 150	≤ 100	≥ 90	EI 120	EI 120
The lamella mat's thickness must correspond to the joint width. Coating with FLAMMOTECT-A: <ul style="list-style-type: none"> <li>• lamella mat (depth ≥ 50 mm)</li> <li>• joint between two lamella mats (depth ≥ 50 mm)</li> <li>• open side of lamella mat</li> <li>• reveal (≥ 15 mm around the edges)</li> </ul> The lamella mat may be immersed in the building element. In this case the inner surfaces of the building element must be coated as well.						
Loose mineral wool EI 120 - V - X - B - W 10 - W 30 (wall) EI 120 - T - X - B - W 10 - W 30 (wall) EI 120 - H - X - B - W 00 - W 20 (floor)	≥ 100	≥ 150	≤ 30 (wall) ≤ 20 (floor)	≥ 75	EI 120	EI 120
Coating of surface with FLAMMOTECT-A.						
Fire protection filler EI 120 - H - X - B - W 00 - W 04 EI 120 - V - X - B - W 00 - W 04 EI 120 - T - X - B - W 00 - W 04	≥ 100	≥ 150	≤ 4	≥ 8	EI 120	EI 120
Application of FLAMMOTECT-A filler: <ul style="list-style-type: none"> <li>• depth ≥ 8 mm</li> <li>• on each side ≥ 15 mm</li> </ul>						

Consult the installation manual for specific information about the individual design variants.