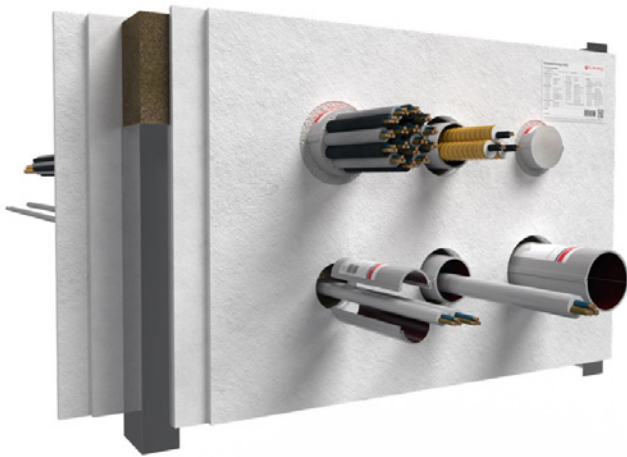


System Cable Tube

Easy-to-install penetration sealing system consisting of two half shells with an inner lining made of fire protection fabric



System data

Certificate of usability		ETA-22/0053
Thickness of structural element	Plasterboard wall	≥ 100
	Solid wall	≥ 100
	Timber wall	≥ 100
	Solid floor	≥ 125
	Timber floor	≥ 140
Sealing thickness	Wall	≥ 150
	Floor	≥ 150
Maximum sealing size	Wall	1200 × 2000
	Floor	640 × ∞

All specifications in mm

Fire Resistance Class

max. EI 120 in acc. with EN 13501-2

Areas of Application

- plasterboard walls, solid walls, solid floors, timber construction (CLT walls and floors)

Benefits

- can be applied to already installed services
- 100% occupancy of the Cable Tube cross section possible
- easy installation without additional cladding of the aperture edge
- easy subsequent installation of services

Allowed services

		max. diameter*
	Cables	≤ 80
	Cable bundles	≤ 107 / ≤ 21
	single	≤ 63 / ≤ 21
	bundled	≤ 107 / ≤ 32 / ≤ 21
	Wave guides	≤ 28.5
	speedpipes	24 × ≤ 7.0
		7 × ≤ 10.0
		5 × ≤ 12.0
	Combustible pipes	≤ 32
	HVAC split line combinations	✓

*All specifications in mm

System Cable Tube

Products



Cable Tube CT

- Ø 60 / L 150 mm – Art. no. 01276101
- Ø 90 / L 150 mm – Art. no. 01279101
- Ø 90 / L 200 mm – Art. no. 01279201
- Ø 90 / L 300 mm – Art. no. 01279301
- Ø 120 / L 150 mm – Art. no. 01271151
- Ø 120 / L 200 mm – Art. no. 01271201
- Ø 120 / L 300 mm – Art. no. 01271301



FLAMMOTECT-A

Filler

- 5 kg pail – Art. no. 01155135
- 12.5 kg pail – Art. no. 01155134
- 310 ml cartridge – Art. no. 01155115
- 600 ml flow pack – Art. no. 01155153



GFM

Fire protection mortar

- 25 kg bag – Art. no. 01167030



Mineral wool

- 10 kg bag – Art. no. 01183000



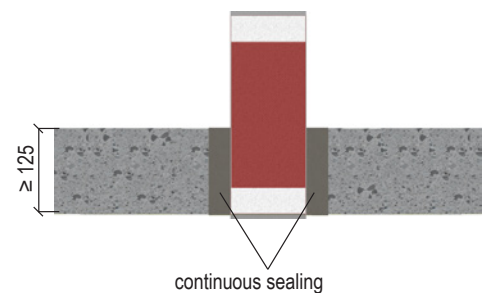
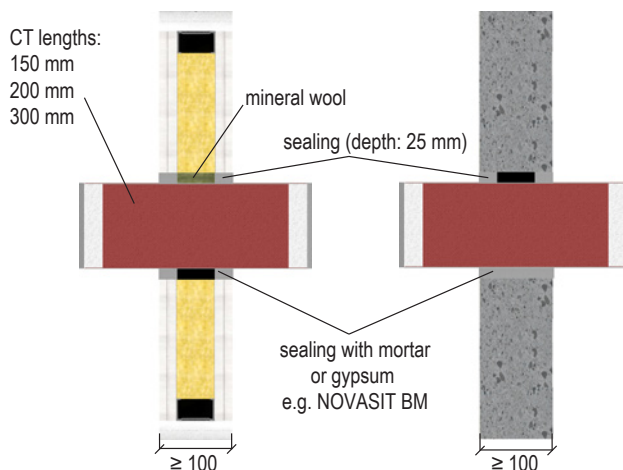
Label

- 1 piece – Art. no. 14003

Design

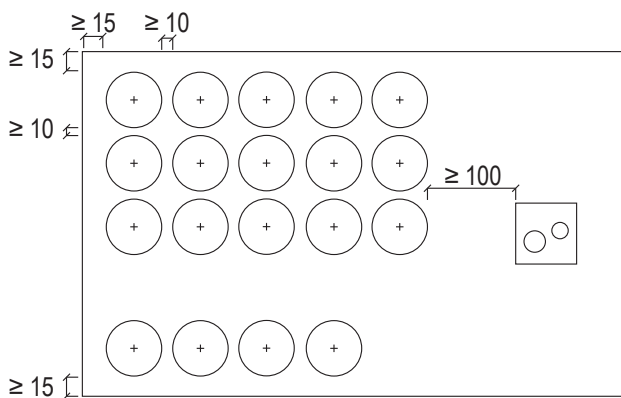
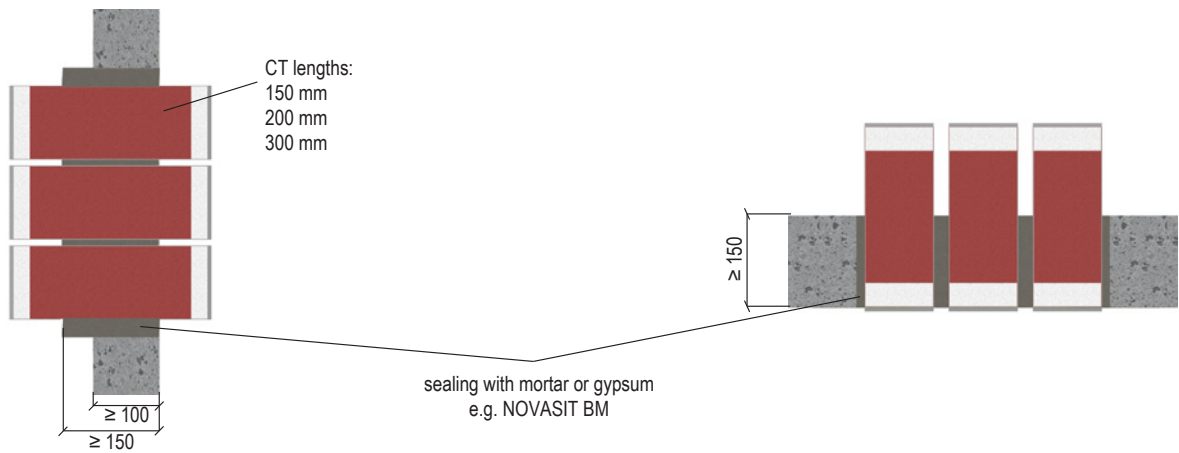
All specifications in mm

For single installation

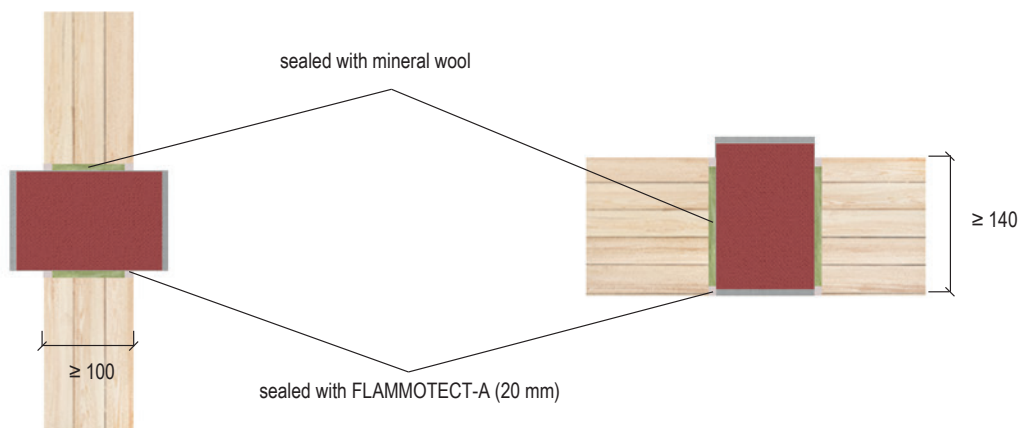


System Cable Tube

For group installation



For timber construction



Initial supports

Wall [mm] (on both sides)	Timber wall [mm] (on both sides)	Floor [mm] (above floor)
≤ 500	≤ 400	≤ 500

System Cable Tube

Design variants

Service	Specifications	Fire resistance class			
		Plasterboard wall / solid wall	Solid floor	Timber wall	Timber floor
Cable Tube 150 mm					
Cables	$\varnothing \leq 21$ mm	EI 90	EI 90	-	EI 90
Cable bundles	$\varnothing \leq 100\%$ / 14 mm	EI 90	EI 90	-	EI 90
	$\varnothing \leq 100\%$ / 21 mm	EI 90	EI 60	-	-
Electrical installation conduits (single)	$\varnothing \leq 32$ mm with/without cables ≤ 14 mm	EI 90	EI 90 (max. 3 conduits)	EI 90	EI 90
	$3 \times \varnothing \leq 32$ mm with/without cables ≤ 14 mm	-	-	EI 90	EI 90
	$\varnothing \leq 40$ mm with/without cables ≤ 21 mm	EI 90	-	-	-
Electrical installation conduits (bundled)	$\varnothing \leq 90$ mm with single conduits $\varnothing \leq 40$ mm with/without cables ≤ 21 mm	EI 90	-	-	-
speedpipes	$\varnothing \leq 100\%$ / 14 mm	EI 90	EI 90	-	-
HVAC split line combinations	Double copper pipe $\varnothing 10/18$ mm + PEF pipe insulation (s 9 mm) + PE-100 condenser pipe $\varnothing \leq 25$ mm + max 3 cables $\varnothing \leq 14$ mm	EI 90	EI 90	-	EI 90
Cable Tube 200 mm					
Cables	$\varnothing \leq 21$ mm	EI 120	EI 120	-	-
Cable bundles	$\varnothing \leq 100\%$ / 14 mm	EI 120	EI 120	-	-
	$\varnothing \leq 100\%$ / 21 mm	EI 120	EI 60	-	-
Electrical installation conduits (single)	$\varnothing \leq 32$ mm with/without cables ≤ 14 mm	EI 120	EI 120 (max. 3 conduits)	-	-
	$\varnothing \leq 40$ mm with/without cables ≤ 21 mm	EI 120	-	-	-
Electrical installation conduits (bundled)	$\varnothing \leq 90$ mm with single conduits $\varnothing \leq 40$ mm with/without cables ≤ 21 mm	EI 120	-	-	-
	$\varnothing \leq 100$ mm with single conduits $\varnothing \leq 32$ mm with/without cables ≤ 21 mm	EI 120	-	-	-
speedpipes	$\varnothing \leq 100\%$ / 14 mm	EI 120	EI 120	-	-
HVAC split line combinations	Double copper pipe $\varnothing 10/18$ mm + PEF pipe insulation (s 9 mm) + PE-100 condenser pipe $\varnothing \leq 25$ mm + max 3 cables $\varnothing \leq 14$ mm	EI 90	EI 90	-	-
	Double copper pipe $\varnothing 22/22$ mm + PEF pipe insulation (s 9 mm) + PE-100 condenser pipe $\varnothing \leq 25$ mm + max 3 cables $\varnothing \leq 14$ mm	-	EI 120 + lamella mat ≥ 250 mm \times 30 mm above floor	-	-
Cable Tube 300 mm					
Cables	$\varnothing \leq 21$ mm	EI 120	EI 120	-	-
	$\varnothing \leq 50$ mm	EI 90	EI 60	-	-
	$\varnothing \leq 80$ mm	EI 90 (solid wall ≥ 100 mm)	EI 60	-	-
Cable bundles	$\varnothing \leq 100\%$ / 21 mm	EI 120	EI 120	-	-
Wave guides	$\varnothing \leq 28$ mm	EI 120	-	-	-
Electrical installation conduits (single)	$\varnothing \leq 40$ mm with/without cables ≤ 21 mm	EI 120	EI 120	-	-
	$\varnothing \leq 63$ mm with/without cables ≤ 21 mm	-	EI 120	-	-

System Cable Tube

Service	Specifications	Fire resistance class			
		Plasterboard wall / solid wall	Solid floor	Timber wall	Timber floor
Cable Tube 300 mm					
Electrical installation conduits (bundled)	Ø ≤ 90 mm with single conduits Ø ≤ 40 mm with/without cables ≤ 21 mm	EI 120	-	-	-
	Ø ≤ 100 mm with single conduits Ø ≤ 32 mm mit/ohne Kabel ≤ 21 mm	EI 120	EI 120 (solid floor ≥ 200 mm)	-	-
speedpipes	Ø ≤ 100% / 14 mm	EI 120	EI 120	-	-
HVAC split line combinations	Double copper pipe Ø 10/18 mm + PEF pipe insulation (s 9 mm) + PE-100 condenser pipe Ø ≤ 25 mm + max 3 cables Ø ≤ 14 mm	EI 90	EI 90	-	-
	Double copper pipe Ø 22/22 mm + PEF pipe insulation (s 9 mm) + PE-100 condenser pipe Ø ≤ 25 mm + max 3 cables Ø ≤ 14 mm	-	EI 120 + lamella mat ≥ 250 mm × 30 mm above floor	-	-
Combustible pipes made of PVC-U	Ø ≤ 32 mm	EI 120	-	-	-

**NOTE:**

The presented data are merely intended to serve as an overview. For a comprehensive presentation please consult the installation instructions.