

# Firebreather® Air Transfer Grilles

## Air transfer grilles for ventilation between fire compartment walls

Made of stainless steel with an intumescent fire resisting inlay.

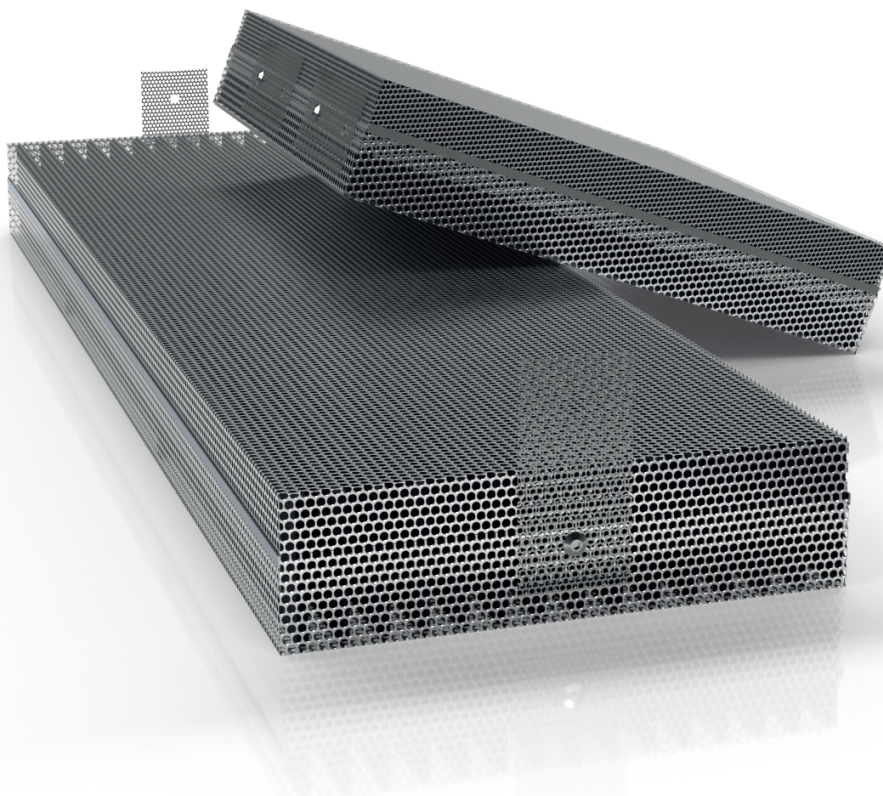
Fire rating: EI 30, EI 60 or EI 90 in accordance with NS-EN 1364-5: 2017 as per RISEFR 030-03101

### Product description

The Firebreather® Air Transfer Grilles ensure adequate venting through fire rated exterior or interior walls without compromising the strict requirements of a fire rated construction.

With the Firebreather® Air Transfer Grilles installed, there will be no flame penetration or no leaking of hot gases to the unexposed side, both instantly and throughout the fire rating period.

Firebreather® Air Transfer Grilles have a fully passive vent design, i.e. they contain no moving parts, detector activating system or cabling.



### Areas of application

- Ventilation through exterior wall
- Through gable wall
- Storage rooms
- Venting of garage facilities
- Indoor fire partitions, between offices, technical rooms, etc.
- In the fire separation in the attic, for ventilation spanning from one gable end to the other

### Benefits

- Instant fire stop
- Ember stop
- Easy installation
- No detection or activation necessary
- No flame penetration or leakage of hot gases to the unexposed side

## Firebreather® Air Transfer Grilles

### Test methods and standards / certificates

NS-EN 1364-5:2017	Fire resistance tests for non-loadbearing elements. Air transfer grilles
-------------------	--

### Certificate of Usability

RISEFR 030-0311

### Air Permeability (informative value)

In its normal condition, the Firebreather® Air Transfer Grille remains open, allowing natural ventilation. The airflow rate through the air transfer grille has been measured at different pressure levels. These figures are provided for information only and are not part of the fire resistance assessments.

Dimension [mm]	Airflow in m <sup>3</sup> /t at pressure drop		
	5PA	10PA	15PA
150×150	49	72	89
200×200	93	141	179
600×600	1000	1420	1810

### Products

Consisting of: perforated stainless steel (AISI 304) and Palusol

Article	Standard width [mm]	Standard height [mm]	Standard depth [mm]	Fire rating	Art. no.
Firebreather® Air Transfer Grille	150	150	40	EI 30	ATG-15153
				EI 60	ATG-15156
				EI 90	ATG-15159
Approved louvres:	TROX® Auranor OVA louvre (150 × 150 mm)				OVA-150-150
	Flexit fixed louvre, steel (150 × 150 mm)				FLEXIT 150x150
	Flexit flap valve (150 × 150 mm)				FLEXIT-KLAFF
Firebreather® Air Transfer Grille	200	200	40	EI 30	ATG-20203
				EI 60	ATG-20206
				EI 90	ATG-20209
Approved louvres:	TROX® Auranor OVA louvre (200 × 200 mm)				OVA-200-200
	Flexit fixed louvre, steel (200 × 200 mm)				FLEXIT 225x225
Firebreather® Air Transfer Grille	500	100	40	EI 30	ATG-50103
				EI 60	ATG-50106
				EI 90	ATG-50109
Approved louvre:	TROX® Auranor OVA louvre (500 × 100 mm)				OVA-500-100
Firebreather® Air Transfer Grille	500	150	40	EI 30	ATG-50153
				EI 60	ATG-50156
				EI 90	ATG-50159
Approved louvre:	TROX® Auranor OVA louvre (500 × 150 mm)				OVA-500-150
Firebreather® Air Transfer Grille	600	600	40	EI 30	ATG-60603
				EI 60	ATG-60606
				EI 90	ATG-60606
Approved louvres:	TROX® Auranor OVA louvre (600 × 600 mm)*				OVA-600-600
	TROX® Auranor RIA louvre (600 × 600 mm)*				Trox-Ria
also approved for Air Transfer Grille sizes below 600 × 600 mm					

We also offer custom-sized Air Transfer Grilles from 100 × 100 mm to 600 × 600 mm. Please send an enquiry to [info@flamro.com](mailto:info@flamro.com) for any individual requests.