

# AWM II

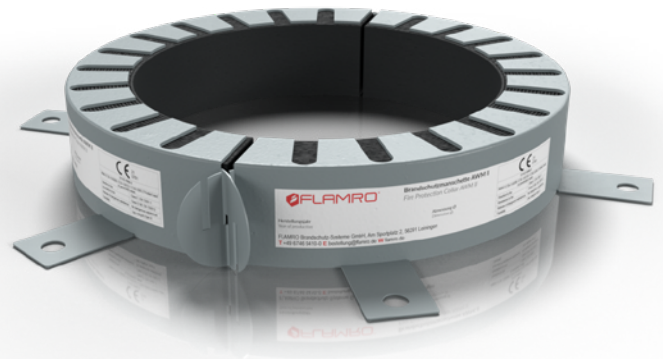
## Collar

### Description

Externally attached fire protection collar consisting of a sheet steel housing with an intumescent inlay. In the event of fire, the intumescent inlay reacts with strong expansion pressure and permanently closes the opening of the building element to prevent the passage of fire and smoke.

### Application Areas

- Fire protection collar for use on combustible pipes with and without insulation.
- Suitable for a variety of special pipes and design variants.
- Installation in plasterboard walls, solid walls and solid floors.



### Delivery and Packaging

Diameter	Item number
Ø 32 mm	01142032
Ø 40 mm	01142040
Ø 50 mm	01142050
Ø 63 mm	01142063
Ø 75 mm	01142075
Ø 90 mm	01142090
Ø 110 mm	01142110
Ø 125 mm	01142125
Ø 140 mm	01142140
Ø 160 mm	01142160
Ø 180 mm	01142180
Ø 200 mm	01142200

Diameter	Item number
Ø 225 mm	01142225
Ø 250 mm	01142250
Ø 280 mm	01142280
Ø 300 mm	01142300
Ø 315 mm	01142315
Ø 355 mm	01142355
Ø 400 mm	01142400
Ø 450 mm	01142450
Ø 500 mm	01142500

# AWM II

## Technical Data

<b>Material</b>	<ul style="list-style-type: none"> <li>• powder-coated sheet steel housing up to external Ø 200 mm</li> <li>• galvanised sheet steel housing from external Ø 225 mm</li> <li>• intumescent inlay</li> </ul>
<b>Coating</b>	<ul style="list-style-type: none"> <li>• light grey (housing)</li> <li>• anthracite (inlay)</li> </ul>
<b>Expansion rate</b>	18 to 38 times
<b>Use category</b>	Type X in acc. with EOTA TR024
<b>Storage</b>	Dry indoors.
<b>Safety information</b>	Please note the safety data sheet for the ROKU® Strip.

## Dimensions

Collar size Ø	Internal Ø D2	External Ø D1	Installation height H1	Number of tabs [n]	Size adjustable
32	40	50	26.0	2	✓
40	48	58	26.0	2	
50	57	68	26.0	2	
63	70	94	26.0	4	
75	83	106	26.0	4	
90	100	132	26.6	4	
110	120	155	26.6	4	
125	135	172	40.0	4	
140	152	200	40.0	6	
160	169	220	40.0	6	
180	184	264	40.0	8	-
200	204	284	40.0	8	
225	239	328	51.5	10	
250	264	353	51.5	10	
280	289	378	51.5	12	
300	314	403	51.5	12	
315	328	417	51.5	12	
355	370	459	51.5	12	
400	415	504	51.5	12	
450	465	554	51.5	14	
500	515	604	51.5	14	

All specifications in mm

