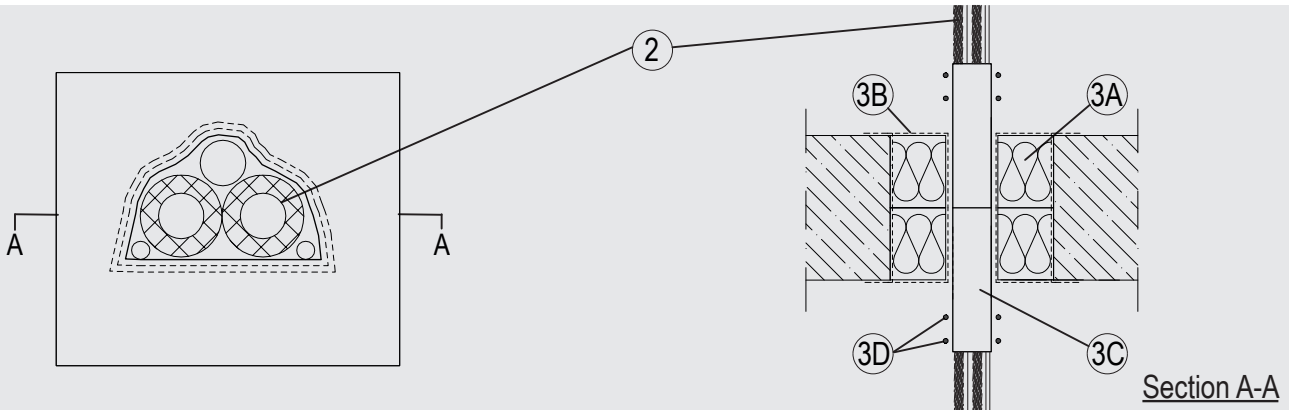


# Through-penetration Firestop Systems

## System No. F-A-8044

ANSI/UL1479 (ASTM E814)	CAN / ULC S115
F Rating – 3 Hr	F Rating – 3 Hr
T Rating – 1 Hr	FT Rating – 1 Hr
	FH Rating – 3 Hr
	FTH Rating – 1 Hr



System tested with a pressure differential of 2.5 Pa between the exposed and the unexposed surfaces with the higher pressure on the exposed side.

### 1. Floor Assembly

Min. 4-1/2 in. (115 mm) thick lightweight or normal weight (100-150 pcf or 1600 - 2400 kg/m<sup>3</sup>) concrete. Opening shall be circular or rectangular with max diameter or dimensions of 1-1/2 in. (116 mm).

### 2. Services

'Climasplit' bundle of max diameter 2 in. (50 mm) or smaller, annular space between the bundle and the periphery of the opening to be 1-1/4 in (33 mm) and containing the following services:

- A. 1 off 1 in. (25 mm) diameter (or smaller), 1/16 in. (1.5 mm) wall thickness, PVC-U pipe for use in closed (process or supply) or vented (drain, waste or vent) piping systems.
- B. 1 off 3/4 in. (18 mm) diameter (or smaller), 1/16 in. (1 mm) wall thickness, Copper pipe with 9 mm PE insulation for use in closed (process or supply) or vented (drain, waste or vent) piping systems.
- C. 1 off 3/8 in. (10 mm) diameter (or smaller), 1/16 in. (1 mm) wall thickness, Copper pipe with 9mm PE insulation for use in closed (process or supply) or vented (drain, waste or vent) piping systems.
- D. Max 5/C No. 15 AWG (1.5 mm) diameter (or smaller), copper conductor cable with EPR insulation and Rubber jacket.
- E. Max 5/C No. 15 AWG (1.5 mm) diameter (or smaller), copper conductor cable with PVC insulation and PVC jacket.

### 3. Firestop System

The Firestop System shall consist of the following:

- A. Packing material – 2 layers of Nom. 2-3/8 in. (60 mm) thick mineral wool board min. 9.3 pcf (150 kg/m<sup>3</sup>) firmly packed into the opening of the floor as a permanent form.
- B. Fill, Void or Cavity Material\* – Min. 1/16 in. (2 mm) dry film thickness to be applied inside the aperture before installation and over the full surface of the mineral wool boards, and overlapping onto the floor by min. 3/4 in. (20 mm). Min. 1/32 in. (1mm) dry film thickness to be applied over the surface of the cables and tray to a minimum length of 10 in. (254 mm) from both faces of the board.

#### Flamro Brandschutz-Systeme GmbH – FLAMMOTECT-A

- C. Fill, Void or Cavity Material\* – 2 lengths of 2 layers of 1/16 in (1.5 mm) by 5 in. (125 mm) wrap butt jointed centrally within the depth of the seal around the bundle to a total length of 10 in. (250 mm).

#### Flamro Brandschutz-Systeme GmbH – DG-CR 1.5

- D. 24 AWG Steel wire tied around 3C at nominally 1 in. (25 mm) and 2 in. (51 mm) from both faces of the seal.