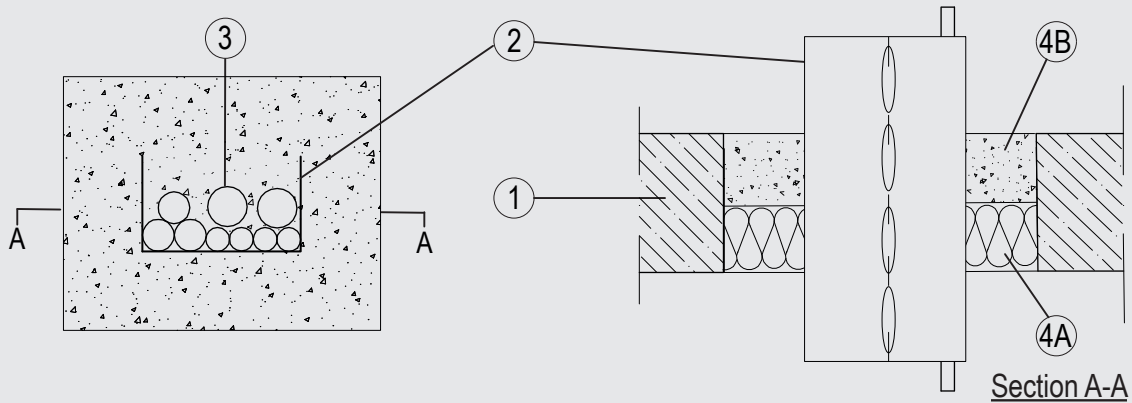


Through-penetration Firestop Systems

System No. F-A-4012

ANSI/UL1479 (ASTM E814)	CAN / ULC S115
F Rating – 3 Hr	F Rating – 3 Hr
T Rating – 2 Hr	FT Rating – 2 Hr
	FH Rating – 3 Hr
	FTH Rating – 2 Hr



1. Floor Assembly

Min. 4-1/2 in. (115 mm) thick lightweight or normal weight (100-150 pcf or 1600 - 2400 kg/m³) concrete. Opening shall be rectangular with max dimensions of 7-7/8 in. (200 mm) by 6-1/4 in. (160 mm).

2. Cable Tray*

Max 4 in (100 mm) wide by 2-3/8 in. (60 mm) deep open-perforated or solid sheet cable tray with side rails formed of min 0.05 in. (1.5 mm) thick steel. Cable trays to be rigidly supported on both sides of the floor assembly.

3. Cables

Aggregate cross-sectional area of cables in cable tray not to exceed 15.48 percent of the cross-sectional area of the cable tray based on a max 1 in. (25 mm) cable loading depth within the tray. Any combination of the following types and sizes of cables may be used:

- A. Max 5/C No. 15 AWG (1.5 mm) diameter (or smaller), copper conductor cable with EPR insulation and Rubber jacket.
- B. Max 5/C No. 15 AWG (1.5 mm) diameter (or smaller), copper conductor cable with XPLE insulation and EVA jacket.
- C. Max 5/C No. 15 AWG (1.5 mm) diameter (or smaller), copper conductor cable with PVC insulation and PVC jacket.

4. Through-Penetration Firestop System

The Through-Penetration Firestop System shall consist of the following:

- A. Packing material – Nom. 2-3/8 in. (60 mm) thick mineral wool board min. 9.3 pcf (150 kg/m³), firmly packed into the opening of the floor as a permanent form flush to the bottom face of the floor.
- B. Fill, Void or Cavity Material* – Mortar - Nom 2-1/8 in. (55 mm) cast in to aperture in the floor over the packing material and around the services.

Flamro Brandschutz-Systeme GmbH – GFM

*Indicates such products shall bear the UL or cUL Certification Mark for jurisdictions employing the UL or cUL Certification (such as Canada), respectively. Reprinted from Product iQ with permission from UL Solutions. ©2024 UL LLC.