

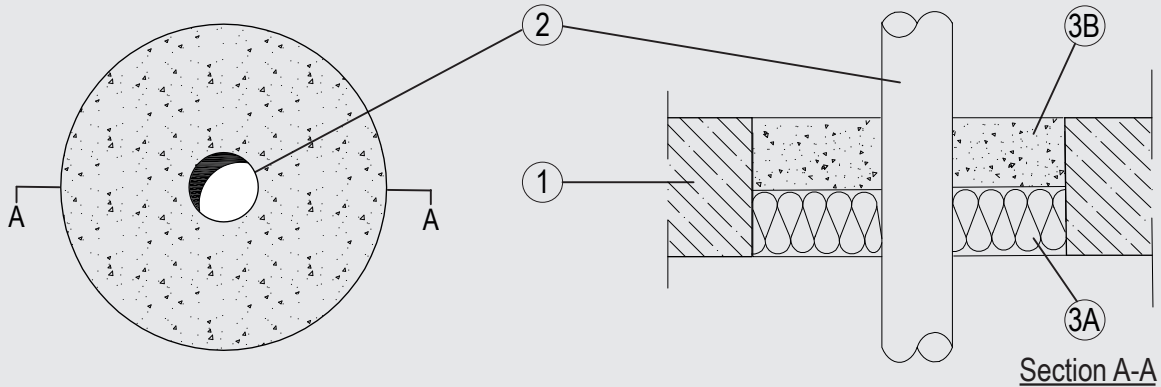
# Through-penetration Firestop Systems

## System No. F-A-1166

ANSI/UL1479 (ASTM E814)

CAN / ULC S115

F Rating – 3 Hr	F Rating – 3 Hr
T Rating – 1/2 Hr	FT Rating – 1/2 Hr
	FH Rating – 3 Hr
	FTH Rating – 1/2 Hr



### 1. Floor Assembly

Min. 4-1/2 in. (115 mm) thick lightweight or normal weight (100-150 pcf or 1600 - 2400 kg/m<sup>3</sup>) concrete. Opening shall be rectangular or circular with max dimensions of 5-1/4 in. (132 mm).

### 2. Pipes/ Tubes

Single to be installed within the opening. The annular space between the pipes and the periphery of the opening to be 2 in (50 mm). Pipes to be rigidly supported on both sides of the floor assembly. The following penetrants may be used:

- A. Max 1-1/4 in. (32 mm) diameter Schedule M (or heavier) copper pipe for use in closed (process or supply) or vented (drain, waste or vent) piping systems.
- B. Max 1-1/4 in. (32 mm) diameter Schedule 5 (or heavier) steel pipe for use in closed (process or supply) or vented (drain, waste or vent) piping systems.

### 3. Through-Penetration Firestop System

The Through-Penetration Firestop System shall consist of the following:

- A. Packing material – Nom. 2-3/8 in. (60 mm) thick mineral wool board min. 9.3 pcf (150 kg/m<sup>3</sup>), firmly packed into the opening of the floor as a permanent form flush to the bottom face of the floor.
- B. Fill, Void or Cavity Material\* – Nom 2-1/8 in. (55 mm) cast in to aperture in the floor over the packing material and around the services.

Flamro Brandschutz-Systeme GmbH – GFM