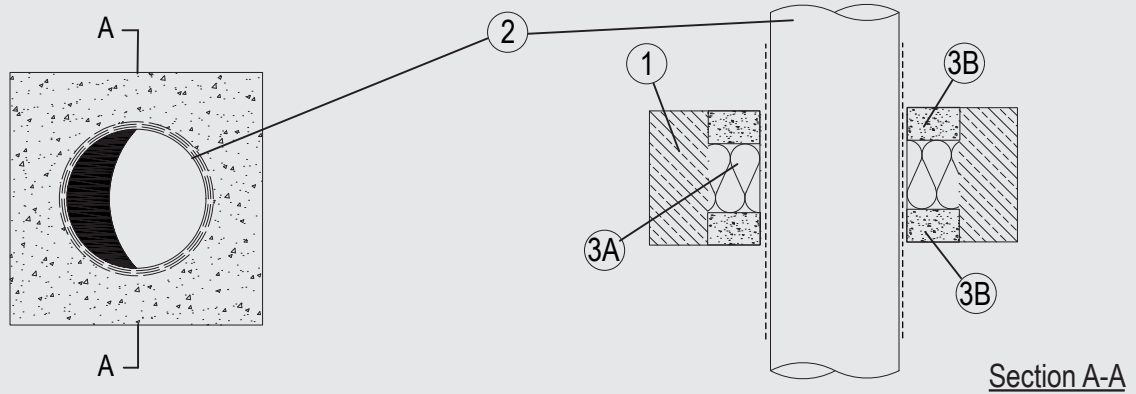


# Through-penetration Firestop Systems

## System No. C-AJ-1762

| ANSI/UL1479 (ASTM E814) | CAN / ULC S115    |
|-------------------------|-------------------|
| F Rating – 3 Hr         | F Rating – 3 Hr   |
| T Rating – 1 Hr         | FT Rating – 1 Hr  |
|                         | FH Rating – 3 Hr  |
|                         | FTH Rating – 1 Hr |



System tested with a pressure differential of 2.5 Pa between the exposed and the unexposed surfaces with the higher pressure on the exposed side.

### 1. Floor Assembly

Min. 4-1/2 in. (115 mm) thick normal weight (nom. 135-150 pcf or nom. 2160-2400 kg/m<sup>3</sup>) concrete. Wall may also be constructed of any UL Classified Concrete Blocks\*. Opening shall be circular or rectangular with max diameter or dimensions of 3-3/4in. (95 mm).

See Concrete Blocks (CAZT) category in UL ProductIQ for names of manufacturers.

### 2. Through Penetrant

One pipe or tubing to be installed concentrically or eccentrically within the firestop system. The annular space between the pipe or tubing and periphery of the opening shall be min 0 in. (point contact) to max 0.8 in. (20 mm). Pipe or tubing to be rigidly supported on both sides of floor or wall assembly. The following types and sizes of pipes or tubes may be used:

- A. Steel pipe - Nom 3 in. (76 mm) diameter (or smaller) 0.12 in (3.2 mm)(or thicker) steel pipe.

### 3. Firestop System

The Through-Penetration Firestop System shall consist of the following:

- A. Packing Material – Min 4-1/3 in. (110 mm) thickness of min 6 pcf (100 kg/m<sup>3</sup>) mineral wool insulation firmly packed into annulus as a permanent form. Packing material to be recessed from both surfaces of floor or wall to accommodate the required thickness of fill material
- B. Fill, Void or Cavity Material\*
  - 1. Min 0.12 in. (3 mm) dry film thickness to be applied on pipe within the opening and 15-3/4 in. (400 mm) from both surfaces of floor and wall assembly prior to installation of packing material (Item 3A)
  - 2. Min 0.08 in. (2 mm) thickness of fill material applied within the annulus, flush with both surfaces of floor or wall assembly.

**Flamro Brandschutz-Systeme GmbH – FLAMMOTECT-A**

\*Indicates such products shall bear the UL or cUL Certification Mark for jurisdictions employing the UL or cUL Certification (such as Canada), respectively. Reprinted from Product iQ with permission from UL Solutions. ©2024 UL LLC.